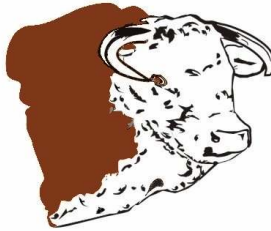
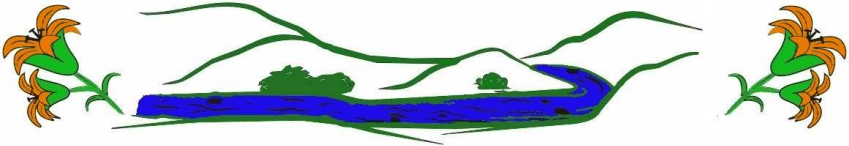


LILYBROOK HEREFORDS

LBH



HL



Bulls On Offer

2009



10 Bulls going to Calgary Bull Show & Sale, March 4&5
10 Bulls going to Medicine Hat Bull Sale, March 17&18
22 Bulls by Private Treaty
90 Yearling Bulls

Welcome.

No, we are **not** having a Production Sale, we are still selling the majority of our Herefords right here at home where we are able to show you the cow herd along with the Bull Offering. Although we have a string entered in the Calgary Bull Sale March 4&5 and at the Medicine Hat Bull Sale on March 17&18. We would like to welcome all of you to come visit us here at the ranch or at either Spring Bull Sales to appraise our bulls.

We would like to specially thank all our Buyers and Bidders over the last year for their great support and friendship. It is people like you that make it a joy to be in the Hereford Business in these challenging times in the beef industry.

Just a quick note on our Bull Offering: Our cattle are raised on dry land pastures, which mostly consist of a Crested Wheat Grass, Brome Grass and a small percentage of Alfalfa mix. We wean the Calves in later September and turn them out on 2nd growth Hay fields or good pasture until we run out of good quality forage. At this point we start them on a Silage and Hay TMR ration, with their future and longevity in mind, we never push them hard, by the time they get to be yearlings we add up to 8 pounds of Barley / Oats mix to their daily meal. During the summer months they run on Grass only until middle of October to early November when we start them on a TMR ration again. We feel these Bulls will perform in anybody's Environment and Management Style.

We stand behind our Cattle and guarantee them in every respect. We are hard on our cow herd, they have to perform on limited input and labor resources, we only keep the very best, our offering consists of the top 40% of calves born. We pay a lot of attention to carcass information and have collected Ultra Sound Scanning Information on every Yearling both Males and Females for the last 8 years. We also retain full ownership on all our Cull Bull Calves and Commercial Steers to slaughter, the results are excellent and tell us we are on the right track.

Last year's steers we fed with Kasko Cattle Co. at Coaldale, 95 steers went in January 31st with 710 pounds, the last load went to slaughter August 14th at 1406 pounds average weight and a total gain of 696 pounds, were on feed for 183 days **gained 3.79 pounds per day** with a **DMG feed conversion of 5.87** and a **cost per pound of gain of 77.78 cents**. At the time average feedlot conversion was 6.25 to 6.5 DMG. We feel these results are very good, considering the majority were our bottom end calves, none of the runts sold elsewhere.

With that said, I won't bore you any longer, wish you all a good calving season and a great Grass Year, hope to see you all at the Bull Sales or where ever our trails shall cross. Potentially with a better labor situation here at the home front, I might even be able to hit the road in the future to come and visit more of our customers and friends.

If you like more info than what we provide here don't hesitate to call or please visit our web site at www.lilybrookherefords.com

Lilybrook Herefords Inc. - **Andy Schuepbach** and Family.

Lilybrook Herefords Inc.

Andy & Margaret Schuepbach

Phone: 403 625-4693

Cell: 403 625-6316

Box 2044

Claresholm, Alberta, Canada, T0L 0T0

Email: andy@lilybrookherefords.com

Dedicated fax: 403 625-1500

Website: www.lilybrookherefords.com



Hans Ulrich

Phone: 403 625-2237

Cell: 403 625-6629

We select for:

- Calving Ease**
- Milking Ability**
- Fertility**
- Easy Fleshing**
- Thickness**
- Muscle**
- Soundness**
- Longevity**
- Carcass**
- Performance**



The ranch is located, 10 miles (16 km) east of Claresholm on Hyw. 520, then 4.5 miles (7km) north on Range Rd. 253.

Breed Avg. EPDs for 2007/2008 Born Calves

	CE	BW	WW	YW	Milk	TM	MCE	SC	Cow	Stay	MPI	Fat	REA	MAR
EPD	0.0	+3.5	+41.1	+67.8	+16.2	+36.7	+0.6	+0.6	+35.2	-0.3	+138.8	+0.002	+0.17	+0.03

K 64H RIBSTONE LAD 157K C02764939

Tattoo: **CJK 157K**
 Birth Date: **May 13, 2000**

BW: n/a Adj: n/a Ind: n/a
 WW:**620** Adj:**738** Ind:**108**
 YW:**1130** Adj:**1268** Ind:**108**



K 132W RIBSTONE 99Z C02459092
 STANDARD RIBSTONE 16E C02621195
 RUSTANDARD 6T LASS 8Y C02406112
STANDARD 16E RIBSTONE 64H C02713947
 STANDARD V LAD 56C C02563100
 STANDARD LASS 23E C02641339
 STANDARD LASS 14C C02559682
 LCI SUPER VOLTAGE 15W C02301286
 SNS SUPER PACE ET 61Z C02449944
 SNS L1 PACESETTER LASS 2T C02228491
K 61Z SUPER LADY 41G C02689821
 LCI ULTIMATE MASTER 58X C02346176
 K 58X MASTER LADY 89Z C02459084
 K 25N COMMANDETTE 170W C02335118

	CE	BW	WW	YW	Milk	TM	MCE	SC	Cow	Stay	MPI	Fat	REA	MAR
EPD	+1.8	+4.2	+49.8	+96.7	+33.3	+58.2	+2.0	+1.6	+48.7	-0.7	+175	-0.031	+0.50	+0.71
Acc	.56	.87	.82	.82	.61	-	.46	.51	.94	.90	.81	.55	.57	.52

LBH 73L STANDARD 268P C02847073

Tattoo: **LBH 268P**
 Birth Date: **Mar 12, 2004**

BW:**82** Adj:**88** Ind:**110**
 WW:**627** Adj:**704** Ind:**109**
 YW:**962** Adj:**1026** Ind:**100**



BAR-OM 656 ST COMMAND LAD 277D C02599095
 AGA 277D STANDARD 191G C02684156
 AGA 852 MISS STANMORE ET 8C C02570349
AGA 191G STANDARD ET 73L C02796307
 1M STANDARD AGA 13P C02058210
 MISS 13P STANDARD AGA 26T C02223509
 MISS 46E BRITISHER AGA 22L C01847132
 BAR PIPE BRIGADIER 19Y C02389455
 CTY BRIGADER 22B C02623018
 LADY 66J B DOM 509 A18704719
LBH 22B MISS RED DOMINO 102M C02806038
 XTC 15Z ENERLAD STAN 5C C02548395
 AGA 5C MISS ENERLAD 115K C02757199
 AGA MISS 6U BRIT 27Y C02401134

	CE	BW	WW	YW	Milk	TM	MCE	SC	Cow	Stay	MPI	Fat	REA	MAR
EPD	+4.8	+1.7	+45.5	+57.0	+22.0	+44.8	+3.2	+0.2	+14.5	-0.2	+161	+0.024	+0.25	-0.09
Acc	.34	.72	.64	.61	.16	-	.20	.36	.87	.79	.61	.36	.37	.31

AGA 121G STANMORE 20J C02738219Tattoo: **XUB 20J**Birth Date: **Feb 15, 1999**BW:**86** Adj:**93** Ind:**104**WW:**790** Adj:**791** Ind:**116**YW:**1230** Adj:**1207** Ind:**110****Semen Available!**

COURT STANMORE K 411 A18566228
 CTY K STANMORE 4016D C02641280
 COURTNEY LASS B290 A19292889
AGA 4016D STANMORE 121G C02684060
 AGA CENTENNIAL 99B C02516386
 AGA 99B CENTENNIAL 51D C02592505
 AGA 91Z MISS HOT SHOT 173B C02525328
 CTY K STANMORE Y9012 C02533444
 AGA 9012 STANMORE 40E C02625116
 MISS 13P STANDARD AGA 26T C02223509
AGA 40E MISS STANMORE 80G C02684038
 GENERATOR ML BRIT 16B C02517588
 AGA 16B MISS GENERATOR 20E C02625090
 AGA MISS 47F DOMINO 20X C02354206

	CE	BW	WW	YW	Milk	TM	MCE	SC	Cow	Stay	MPI	Fat	REA	MAR
EPD	+2.9	+2.1	+50.0	+77.1	+34.7	+59.7	+4.4	+1.1	+24.5	+2.6	+192	-0.020	-0.09	+0.33
Acc	.51	.83	.76	.77	.60	-	.40	.55	.92	.86	.78	.55	.55	.51

LBH 20J STANMORE 31R C02864574Tattoo: **LBH 31R**Birth Date: **Feb 16, 2005**BW:**85** Adj:**91** Ind:**103**WW:**739** Adj:**746** Ind:**117**YW:**1260** Adj:**1223** Ind:**114**

CTY K STANMORE 4016D C02641280
 AGA 4016D STANMORE 121G C02684060
 AGA 99B CENTENNIAL 51D C02592505
AGA 121G STANMORE 20J C02738219
 AGA 9012 STANMORE 40E C02625116
 AGA 40E MISS STANMORE 80G C02684038
 AGA 16B MISS GENERATOR 20E C02625090
 HI STANDARD LAD 20P C02075959
 SJSL HI 20 STAND LAD 10S C02190506
 STANDARD L1 LASS 10G C01665104
LBH 10S STAN LASS 34N C02839909
 AGA 85A STD BRIT ET 26H C02724588
 AGA 26H MISS STD BRITISH 120K C02757187
 AGA 18E MISS HOT SHOT 25G C02684002

	CE	BW	WW	YW	Milk	TM	MCE	SC	Cow	Stay	MPI	Fat	REA	MAR
EPD	-0.2	+5.7	+66.9	+101	+28.3	+61.8	+1.4	+0.9	+69.0	0.0	+194	-0.020	+0.33	+0.30
Acc	.35	.71	.63	.63	.18	-	.21	.32	.87	.78	.61	.37	.38	.33

LBH 38E SILVER PRIDE 52N C02827709

Tattoo: **LBH 52N**
 Birth Date: **Feb 18, 2003**

BW:**102** Adj:**102** Ind:**99**
 WW:**620** Adj:**610** Ind:**100**
 YW:**1031** Adj:**984** Ind:**96**

Semen Available!



AGA 13X BRITISHER 107Z C02451433
 SNS SILVER PRAIRIE 50B C02509999
 SNS GENERATOR'S LADY 15Z C02448033
MARG 50B SILVER PRIDE 38E C02621294
 SNS GENERATOR 28X C02352995
 MARG MISS BEHAV'N 1B C02532060
 MARG 10S DOMINO LADY 23W C02322475
 96 STANDARD ADVANCE 81N C02020446
 DMF 81N STANDARD LAD 303Y C02413198
 DMF MISS 49R STAN 166T C02225215
AGA 303Y MISS STANDARD 1F C02654875
 AGA 47F DOMINO 26W C02309708
 AGA MISS 26W DOMINO 67Z C02449088
 AGA MISS 26S STANDARD 143X C02358017

	CE	BW	WW	YW	Milk	TM	MCE	SC	Cow	Stay	MPI	Fat	REA	MAR
EPD	+1.0	+4.2	+43.2	+70.8	+23.9	+45.5	-0.5	+0.8	+50.2	+2.1	+160	-0.016	+0.36	-0.12
Acc	.26	.74	.66	.66	.31	-	.21	.40	.88	.81	.66	.43	.43	.38

LBH 35J SILVER PRIDE 165N C02827756

Tattoo: **LBH 165N**
 Birth Date: **Mar 1, 2003**

BW:**103** Adj:**105** Ind:**97**
 WW:**620** Adj:**661** Ind:**108**
 YW:**1201** Adj:**1189** Ind:**106**



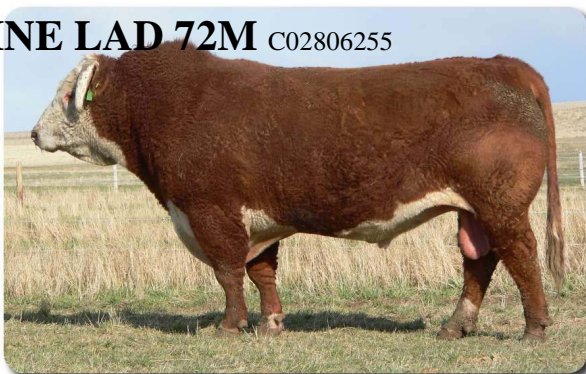
SNS SILVER PRAIRIE 50B C02509999
 MARG 50B SILVER PRIDE 38E C02621294
 MARG MISS BEHAVIN 1B C02532060
SFL 38E SILVER PRIDE 35J C02738964
 SNS GENERATOR 28X C02352995
 SFL MISS GENERATOR 15D C02593807
 SFL 85R REAL PRINCE LADY 89U C02274719
 BAR-OM 656 ST COMMAND LAD 277D C02599095
 AGA 277D STANDARD 191G C02684156
 AGA 852 MISS STANMORE ET 8C C02570349
AGA 191G MISS STANDARD 205J C02738124
 MR MO LE 47F C01524498
 AGA MISS 47F DOMINO 46X C02354216
 MISS 5P STANDARD AGA 59U C02269121

	CE	BW	WW	YW	Milk	TM	MCE	SC	Cow	Stay	MPI	Fat	REA	MAR
EPD	+0.1	+4.8	+30.9	+44.4	+19.1	+34.6	0.0	-0.2	+8.6	+1.6	+140.8	+0.018	-0.20	-0.25
Acc	.24	.71	.63	.64	.33	-	.22	.38	.87	.78	.65	.44	.44	.39

XTC 38J SUNSHINE LAD 72M C02806255

Tattoo: **CXT 72M**
 Birth Date: **Mar 7, 1999**

BW:**100** Adj:**102** Ind:**96**
 WW:**715** Adj:**818** Ind:**108**
 YW:**1335** Adj:**1372** Ind:**113**



CTY STANDARD 1006A A19212289
 CTY SUNSHINE 3325C C02695467
 COURTNEY LASS A16 A19212317
XTC SUNSHINE LAD 38J C02733364
 XTD 6T RUST TEMPEST ET 9A C02495669
 XTC 9A TEMP DIAMOND 36D C02590123
 XTC 53W STAN LASS 21Y C02418601
 BP ANDY COMMANDER 132Z C02430766
 XTC 132Z COMMANDER LAD 36F C02657860
 XTC 37Y RIB LASS 91C C02548457
XTC 36F NORA 82H C02715085
 SNS 107Z SILVER BRIT 6C C02559811
 XTC 6C NORA 30E C02623276
 XTC 45T BRIT LADY 31C C02548413

	CE	BW	WW	YW	Milk	TM	MCE	SC	Cow	Stay	MPI	Fat	REA	MAR
EPD	+1.3	+5.1	+51.6	+101	+2.6	+28.4	+0.1	+1.2	+71.5	+1.4	+139.1	+0.013	+0.44	-0.15
Acc	.31	.76	.69	.70	.45	-	.26	.47	.89	.81	.70	.46	.47	.42

LBH 72M SUNSHINE LAD 119R C02866036

BW:**92** Adj:**92** Ind:**103**
 WW:**742** Adj:**736** Ind:**115**
 YW:**1162** Adj:**1120** Ind:**105**

CTY SUNSHINE 3325C C02695467
 XTC SUNSHINE LAD 38J C02733364
 XTC 9A TEMP DIAMOND 36D C02590123
 Sire: **XTC 38J SUNSHINE LAD 72M** C02806255
 XTC 132Z COMMANDER LAD 36F C02657860
 XTC 36F NORA 82H C02715085
 XTC 6C NORA 30E C02623276
 CTY K STANMORE 4016D C02641280
 AGA 4016D STANMORE 121G C02684060
 AGA 99B CENTENNIAL 51D C02592505
 Dam: **AGA 121G MISS STANMORE 11J** C02738227
 AGA 16B GENERATOR 101E C02625159
 AGA 101E MISS GENERATOR 72G C02684036
 AGA MISS 4S STANDARD 79Y C02401175

	CE	BW	WW	YW	Milk	TM	MCE	SC	Cow	Stay	MPI	Fat	REA	MAR
EPD	+1.2	+3.8	+50.2	+81.9	+14.0	+39.1	+1.9	+0.9	+52.5	+0.5	+152.7	+0.006	+0.38	-0.09
Acc	.15	.56	.47	.50	.15	-	.11	.36	.76	.62	.49	.33	.33	.29

LBH 72M SUNSHINE LAD 220R C02867506

BW:**94** Adj:**94** Ind:**100**
 WW:**617** Adj:**668** Ind:**105**
 YW:**1114** Adj:**1122** Ind:**105**

CTY SUNSHINE 3325C C02695467
 XTC SUNSHINE LAD 38J C02733364
 XTC 9A TEMP DIAMOND 36D C02590123
 Sire: **XTC 38J SUNSHINE LAD 72M** C02806255
 XTC 132Z COMMANDER LAD 36F C02657860
 XTC 36F NORA 82H C02715085
 XTC 6C NORA 30E C02623276
 BAR PIPE BRIGADIER 19Y C02389455
 CTY BRIGADIER 22B C02623018
 LADY 66J B DOM 509 A18704719
 Dam: **AGA 22B MISS BRIGADIER ET 81K** C02766995
 1M STANDARD AGA 13P C02058210
 MISS 13P STANDARD AGA 26T C02223509
 MISS 46E BRITISHER AGA 22L C01847132

	CE	BW	WW	YW	Milk	TM	MCE	SC	Cow	Stay	MPI	Fat	REA	MAR
EPD	+4.5	+1.9	+38.0	+69.6	+11.7	+30.7	+1.5	+1.1	+28.8	+2.7	+141.9	+0.019	+0.26	-0.10
Acc	.18	.66	.57	.55	.17	-	.13	.32	.83	.73	.57	.34	.34	.29

XTC KING'S DIAMOND LAD 87M
C02806207

BW:102 Adj:103 Ind:95
WW:690 Adj:799 Ind:105
YW:1180 Adj:1234 Ind:102

GENERATING STAR 18C C02556080
CFH 18C VIKING 721G C02685533
CFH MISS HIGH CLASS 304C C02553079
Sire: **BCD 721G KING 6K** C02766410
A&G 69X BRITISH STANDARD 077B C02516274
BCD 077B AMBER ET 569E C02639971
BCD 145X AMBER ET 141A C02476850
FE 32P RUSTANDARD 6T C02223367
XTD 6T RUST TEMPEST ET 9A C02495669
JT 19P LADY 95U C02287495
Dam: **XTC 9A TEMP DIAMOND 36D** C02590123
CRF 81N STANDARD 53W C02327163
XTC 53W STAN LASS 21Y C02418601
XTC STANDARD 45T LASS 50W C02331552

	CE	BW	WW	YW	Milk	TM	MCE	SC	Cow	Stay	MPI	Fat	REA	MAR
EPD	-3.8	+5.7	+47.4	+87.7	+16.3	+40.0	-1.8	+0.3	+49.7	-0.2	+149.7	+0.033	+0.64	+0.35
Acc	.30	.77	.70	.71	.41	-	.27	.53	.90	.84	.71	.47	.47	.43

LBH 82K KAPTAIN 121P
C02847004

BW:92 Adj:94 Ind:104
WW:763 Adj:741 Ind:114
YW:1099 Adj:1063 Ind:104

LLL FE STD BRIT 85A C02471613
STANDARD 85A DOMINO 82F C02651555
STANDARD K LASS 106B C02515935
Sire: **C 82F MICKS KAPTAIN 82K** C02755740
CFR ROBINSON 359 C02570467
AC MISS 359 ROBINSON 63F C02663965
AC MISS 10U STANDARD 15Z C02445592
STANDRD LAD 656 4ET C02322540
AGA 656U STANDARD 33G C02684127
AGA MISS 80S VOLTAGE ET 14X C02364606
Dam: **AGA 33G MISS STANDARD 165K** C02757226
AGA 55C STANDARD 18Y C02401126
AGA 18Y MISS STANDARD 89A C02480769
AGA MISS 26W DOMINO 177Y C02401255

	CE	BW	WW	YW	Milk	TM	MCE	SC	Cow	Stay	MPI	Fat	REA	MAR
EPD	+1.7	+3.3	+43.3	+58.6	+14.3	+36.0	+1.6	+0.2	+23.5	+0.6	+148.0	-0.042	+0.17	-0.21
Acc	.34	.68	.59	.61	.26	-	.23	.37	.84	.75	.60	.36	.37	.31

LCI 157K RIBSTONE 87P
C02843381

BW:95 Adj:101 Ind:96
WW:750 Adj:789 Ind:111
YW:1450 Adj:1373 Ind:117

STANDARD RIBSTONE 16E C02621195
STANDARD 16E RIBSTONE 64H C02713947
STANDARD LASS 23E C02641339
Sire: **K 64H RIBSTONE LAD 157K** C02764939
SNS SUPER PACE ET 61Z C02449944
K 61Z SUPER LADY 41G C02689821
K 58X MASTER LADY 89Z C02459084
DUNOON PAGE ET1 C02692717
LCI KAHLUA 82H C02704322
LCI RED HAVEN ET 112A C02472068
Dam: **LCI 82H MISS KAHLUA 152M** C02802670
LCI DUNBAR 172H C02704400
LCI 172H DUNBAR GIRL 16K C02753709
LCI BRITISH DOLLY 151D C02581104

	CE	BW	WW	YW	Milk	TM	MCE	SC	Cow	Stay	MPI	Fat	REA	MAR
EPD	-4.5	+7.8	+45.3	+86.6	+17.9	+40.5	-0.2	+0.9	+57.3	-0.3	+146.7	+0.020	+0.26	-0.16
Acc	.31	.71	.62	.64	.30	-	.24	.35	.87	.79	.64	.41	.41	.36

LCI 157K RIBSTONE 107R
C02862176

BW:94 Adj:98 Ind:104
WW:792 Adj:830 Ind:116
YW:1460 Adj:1417 Ind:110

STANDARD RIBSTONE 16E C02621195
STANDARD 16E RIBSTONE 64H C02713947
STANDARD LASS 23E C02641339
Sire: **K 64H RIBSTONE LAD 157K** C02764939
SNS SUPER PACE ET 61Z C02449944
K 61Z SUPER LADY 41G C02689821
K 58X MASTER LADY 89Z C02459084
DUNOON PAGE ET1 C02692717
LCI KAHLUA 82H C02704322
LCI RED HAVEN ET 112A C02472068
Dam: **LCI 82H KAHLUA ANDIE 174M** C02802721
96 ANDY 81F C02665687
LCI 81F ANDIE 214K C02754015
LCI MADISON DEBI 183G C02677640

	CE	BW	WW	YW	Milk	TM	MCE	SC	Cow	Stay	MPI	Fat	REA	MAR
EPD	+1.5	+3.6	+57.8	+107.9	+27.9	+56.8	+0.9	+1.5	+61.2	+0.2	+180.8	-0.044	+0.64	+0.33
Acc	.26	.68	.59	.57	.18	-	.18	.31	.85	.76	.59	.33	.35	.29

Reference Sires:

LBH 114L GENERAL 193N
C02827694

BW:106 Adj:109 Ind:93
WW:595 Adj:635 Ind:104
YW:1021 Adj:1022 Ind:100

GENERATOR STANDARD 10A C02469961
GEM GENERAL 13G C02689142
AD 75N LASS 31W C02313035
Sire: **AGA 13G GENERAL 114L** C02795506
STANDRD LAD 656 4ET C02322540
AGA 656U MISS STANDARD ET 17H C02724571
AGA MISS 80S VOLTAGE ET 14X C02364606
SJSL HI 20 STAND LAD 10S C02190506
AGA 10S STANDARD 137Y C02401224
GU MISS 46E BRITISHER 10K C01782847
Dam: **AGA 137Y MISS STANDARD 115A** C02480788
STANDARD LAD 95J C01779292
AGA MISS 95J STANDARD 16Y C02401124
MISS 2H BRITISHER AGA 39L C01847149

	CE	BW	WW	YW	Milk	TM	MCE	SC	Cow	Stay	MPI	Fat	REA	MAR
EPD	-6.1	+6.1	+33.3	+60.1	+19.8	+36.5	+1.4	+1.0	+27.8	-0.2	+136.1	-0.013	-0.04	-0.20
Acc	.25	.70	.62	.64	.28	-	.18	.26	.87	.80	.64	.38	.38	.34

LBH 114L GENERAL 192N
C02827807

BW:106 Adj:109 Ind:93
WW:615 Adj:664 Ind:109
YW:1121 Adj:1125 Ind:110

GENERATOR STANDARD 10A C02469961
GEM GENERAL 13G C02689142
AD 75N LASS 31W C02313035
Sire: **AGA 13G GENERAL 114L** C02795506
STANDRD LAD 656 4ET C02322540
AGA 656U MISS STANDARD ET 17H C02724571
AGA MISS 80S VOLTAGE ET 14X C02364606
BAR PIPE BRIGADIER 19Y C02389455
CTY BRIGADER 22B C02623018
LADY 66I B DOM 509 A18704719
Dam: **AGA 22B MISS BRIGADER ET 30K** C02754539
1M STANDARD AGA 13P C02058210
MISS 13P STANDARD AGA 26T C02223509
MISS 46E BRITISHER AGA 22L C01847132

	CE	BW	WW	YW	Milk	TM	MCE	SC	Cow	Stay	MPI	Fat	REA	MAR
EPD	-0.3	+4.3	+32.6	+60.4	+13.5	+29.8	+0.5	+1.0	+4.8	+1.5	+136.4	+0.002	-0.13	-0.39
Acc	.25	.71	.63	.65	.36	-	.22	.42	.87	.78	.65	.46	.46	.41

GEM GENERAL 13G C02689142

BW:104 Adj:105 Ind:92
WW:720 Adj:694 Ind:116
YW:1235 Adj:1140 Ind:105

LCI ET HIGH VOLTAGE 80S C02170890
SNS GENERATOR 28X C02352995
SNS LI PACESETTER LASS 2T C02228491
Sire: **GENERATOR STANDARD 10A** C02469961
BCD 42L STANDARD LAD 417S C02182068
MISS 417 STAN SUPERB 7Y C02400559
STANDARD SUPERB 4K C01788881
STANDARD LAD 93I C01779291
MF STANDARD LAD 75N C02034481
MF MISS 560 7L C01869781
Dam: **AD 75N LASS 31W** C02313035
COMMANDER C02251444
COMMANDER LASS 14T C02251328
DMF MISS 32J BRIT 83M C01932367

	CE	BW	WW	YW	Milk	TM	MCE	SC	Cow	Stay	MPI	Fat	REA	MAR
EPD	-4.0	+5.7	+30.7	+45.9	+14.3	+29.7	-2.1	+1.3	-22.3	-0.9	+131.7	-0.038	-0.20	-0.12
Acc	.43	.78	.71	.72	.63	-	.41	.35	.90	.84	.76	.51	.51	.47

BP HOT SHOT 91Z C02430728

BW: n/a Adj: n/a Ind: n/a
WW:740 Adj:721 Ind:107
YW: n/a Adj: n/a Ind: n/a

LRD ELECTRIC 5P C02049805
LCI ET HIGH VOLTAGE 80S C02170890
LCI 93I STANDARD LASS 102M C01918043
Sire: **HOT SHOT RHRH 20W** C02319899
RB L1 90I DOMINO 970 C02260699
L1 970 COMMANDER LASS RHRH 55T C02235051
L1 COMMANDER LASS ET 3092R C02130011
COMMANDER C02251444
96 STANDARD ADVANCE 81N C02020446
STANDARD LASS 26K C01812226
Dam: **BP COMMANDER LADY 113R** C02118496
HI STANDARD LAD 11K C01787590
BP HI STANDARD LADY 13N C01985017
LRD 35A STANDARD LADY 79H C01641942

	CE	BW	WW	YW	Milk	TM	MCE	SC	Cow	Stay	MPI	Fat	REA	MAR
EPD	-2.8	+8.4	+38.8	+62.1	+29.9	+49.3	+1.3	-0.2	+48.0	-0.8	+152.4	+0.029	-0.01	-0.03
Acc	.30	.68	.62	.64	.53	-	.30	.39	.83	.72	.66	.25	.25	.22

LBH 157K RIBSTONE ET 19T C02904706

Tattoo: **LBH 19T**
 Birth Date: **Feb 2, 2007**

BW:**89** Adj:**104** Ind:0
 WW:**652** Adj:**774** Ind:0
 YW:**1071** Adj:**1126** Ind:0

Dec 2/08 Weight: **1681**
 Pelvic: **16.5 x 13.75 = 227**
 Feb 19/09 Scr Cir: **40**



STANDARD 16E RIBSTONE 64H C02713947
K 64H RIBSTONE LAD 157K C02764939
 K 61Z SUPER LADY 41G C02689821
 AGA 10S STANDARD 137Y C02401224
AGA 137Y MISS STANDARD 115A C02480788
 AGA MISS 95J STANDARD 16Y C02401124

	CE	BW	WW	YW	Milk	TM	MCE	SC	Cow	Stay	MPI	Fat	REA	MAR
EPD	+3.1	+2.0	+37.3	+64.0	+29.5	+48.2	+2.0	+1.0	+42.2	+0.3	-	-0.020	+0.34	+0.17
Acc	PE	.25	.24	.24	.22	-	PE	.16	PE	PE	-	.17	.17	.16

LBH 31R STANMORE 72T C02895527

Tattoo: **LBH 72T**
 Birth Date: **Feb 9, 2007**

BW:**102** Adj:**102** Ind:**97**
 WW:**707** Adj:**662** Ind:**109**
 YW:**1121** Adj:**1026** Ind:**102**

Dec 2/08 Weight: **1833**
 Pelvic: **16.25 x 15.75 = 256**
 Feb 19/09 Scr Cir: **40.5**



AGA 121G STANMORE 20J C02738219
LBH 20J STANMORE 31R C02864574
 LBH 10S STAN LASS 34N C02839909
 SGC 14X STANDARD LAD 53A C02481521
LBH 53A MISS STANDARD 97M C02806034
 AGA 22B MISS BRIGADER 53F C02654909

	CE	BW	WW	YW	Milk	TM	MCE	SC	Cow	Stay	MPI	Fat	REA	MAR
EPD	+0.7	+4.9	+52.6	+86.4	+19.1	+45.4	+0.2	+0.6	+64.6	-0.9	+156.5	-0.003	+0.19	+0.05
Acc	.11	.38	.30	.32	.11	-	.08	.24	.58	.32	.30	.21	.20	.17

LBH 87P RIBSTONE ET 99T C02904783Tattoo: **LBH 99T**Birth Date: **Feb 11, 2007**BW:**100** Adj:**117** Ind:0WW:**723** Adj:**883** Ind:0YW:**1151** Adj:**1237** Ind:0Dec 2/08 Weight: **1724**Pelvic: **16.5 x 15.25 = 252**Feb 19/09 Scr Cir: **39.5**

K 64H RIBSTONE LAD 157K C02764939

LCI 157K RIBSTONE 87P C02843381

LCI 82H MISS KAHLUA 152M C02802670

AGA 10S STANDARD 137Y C02401224

AGA 137Y MISS STANDARD 115A C02480788

AGA MISS 95J STANDARD 16Y C02401124

	CE	BW	WW	YW	Milk	TM	MCE	SC	Cow	Stay	MPI	Fat	REA	MAR
EPD	-0.1	+3.7	+35.1	+59.0	+21.8	+39.4	+0.9	+0.6	+46.5	+0.5	-	+0.006	+0.22	-0.26
Acc	PE	.24	.22	.23	.17	-	PE	.13	PE	PE	-	.15	.15	.13

LBH 165N SILVER PRIDE 110T C02904791Tattoo: **LBH 110T**Birth Date: **Feb 13, 2007**BW:**105** Adj:**105** Ind:**94**WW:**758** Adj:**718** Ind:**118**YW:**1294** Adj:**1196** Ind:**118**Dec 2/08 Weight: **1841**Pelvic: **16.5 x 14 = 231**Feb 19/09 Scr Cir: **39.5**

SFL 38E SILVER PRIDE 35J C02738964

LBH 35J SILVER PRIDE 165N C02827756

AGA 191G MISS STANDARD 205J C02738124

AGA 121G STANMORE 20J C02738219

LBH 20J MISS STANMORE 140M C02806064

AGA 34Z MISS STANDARD 20K C02754214

	CE	BW	WW	YW	Milk	TM	MCE	SC	Cow	Stay	MPI	Fat	REA	MAR
EPD	-0.2	+5.7	+49.9	+81.0	+24.9	+49.8	+1.5	+0.4	+32.9	+0.5	+170.5	+0.008	-0.02	-0.12
Acc	.09	.38	.31	.33	.14	-	.08	.28	.58	.32	.31	.23	.23	.20

LBH 157K RIBSTONE ET 170T C02904826

Tattoo: **LBH 170T**
 Birth Date: **Feb 18, 2007**

BW:**102** Adj:**120** Ind:0
 WW:**648** Adj:**809** Ind:0
 YW:**1107** Adj:**1212** Ind:0

Dec 2/08 Weight: **1709**
 Pelvic: **16.75 x 15 = 251**
 Feb 19/09 Scr Cir: **42.5**



STANDARD 16E RIBSTONE 64H C02713947
K 64H RIBSTONE LAD 157K C02764939
 K 61Z SUPER LADY 41G C02689821
 AGA 10S STANDARD 137Y C02401224
AGA 137Y MISS STANDARD 115A C02480788
 AGA MISS 95J STANDARD 16Y C02401124



	CE	BW	WW	YW	Milk	TM	MCE	SC	Cow	Stay	MPI	Fat	REA	MAR
EPD	+3.1	+2.0	+37.3	+64.0	+29.5	+48.2	+2.0	+1.0	+42.2	+0.3	-	-0.020	+0.34	+0.17
Acc	PE	.25	.24	.24	.22	-	PE	.16	PE	PE	-	.17	.17	.16

LBH 52N SILVER PRIDE 186T C02895540

Tattoo: **LBH 186T**
 Birth Date: **Feb 21, 2007**

BW:**108** Adj:**108** Ind:**92**
 WW:**633** Adj:**617** Ind:**102**
 YW:**1019** Adj:**967** Ind:**96**

Dec 2/08 Weight: **1758**
 Pelvic: **16.25 x 14 = 228**
 Feb 19/09 Scr Cir: **42**



MARG 50B SILVER PRIDE 38E C02621294
LBH 38E SILVER PRIDE 52N C02827709
 AGA 303Y MISS STANDARD 1F C02654875
 AGA 91Z HOT SHOT 18E C02625087
AGA 18E MISS HOT SHOT 197G C02684102
 AGA MISS 10S STANDARD 137W C02312520



	CE	BW	WW	YW	Milk	TM	MCE	SC	Cow	Stay	MPI	Fat	REA	MAR
EPD	-0.8	+6.1	+41.4	+68.3	+20.2	+40.9	-0.8	+0.6	+64.0	+0.2	+144.1	0.000	+0.25	+0.04
Acc	.09	.39	.32	.33	.15	-	.08	.26	.58	.32	.32	.21	.20	.18

LBH 52N SILVER PRIDE 193T C02895541Tattoo: **LBH 193T**Birth Date: **Feb 22, 2007**BW:**103** Adj:**105** Ind:**95**WW:**664** Adj:**658** Ind:**108**YW:**1101** Adj:**1051** Ind:**104**Dec 2/08 Weight: **1793**Pelvic: **15.5 x 14.5 = 225**Feb 19/09 Scr Cir: **40**

MARG 50B SILVER PRIDE 38E C02621294

LBH 38E SILVER PRIDE 52N C02827709

AGA 303Y MISS STANDARD 1F C02654875

AGA 22B BRIGADER 97J C02738257

LBH 97J MISS RED EXTRA 84N C02827759

AGA 85J MISS STANDARD 7L C02795432

	CE	BW	WW	YW	Milk	TM	MCE	SC	Cow	Stay	MPI	Fat	REA	MAR
EPD	+1.2	+4.0	+44.6	+74.5	+24.3	+46.6	-0.1	+0.6	+34.7	-0.2	+158.7	-0.013	+0.15	-0.07
Acc	.09	.38	.30	.32	.12	-	.07	.26	.58	.32	.31	.22	.22	.19

LBH 220R SUNSHINE LAD 262T C02904887Tattoo: **LBH 262T**Birth Date: **March 7, 2007**BW:**108** Adj:**112** Ind:**89**WW:**628** Adj:**664** Ind:**109**YW:**1120** Adj:**1120** Ind:**111**Dec 2/08 Weight: **1939**Pelvic: **16.25 x 14.5 = 236**Feb 19/09 Scr Cir: **42.5**

XTC 38J SUNSHINE LAD 72M C02806255

LBH 72M SUNSHINE LAD 220R C02867506

AGA 22B MISS BRIGADER ET 81K C02766995

C 82F MICKS KAPTAIN 82K C02755740

LBH 82K MISS KAPTAIN 48P C02846856

AGA 102E MISS EXTRA 122H C02712414

	CE	BW	WW	YW	Milk	TM	MCE	SC	Cow	Stay	MPI	Fat	REA	MAR
EPD	+0.5	+5.7	+47.3	+83.4	+12.7	+36.3	+0.6	+0.9	+61.5	+0.5	+144.9	-0.011	+0.22	-0.18
Acc	.08	.37	.30	.32	.10	-	.06	.26	.58	.32	.30	.20	.20	.16

LBH 157K RIBSTONE 271T C02904892

Tattoo: **LBH 271T**
 Birth Date: **Mar 10, 2007**

BW:**94** Adj:**97** Ind:**102**
 WW:**609** Adj:**652** Ind:**107**
 YW:**1056** Adj:**1066** Ind:**106**

Dec 2/08 Weight: **1828**
 Pelvic: **16 x 14.5 = 232**
 Feb 19/09 Scr Cir: **41.5**



STANDARD 16E RIBSTONE 64H C02713947
K 64H RIBSTONE LAD 157K C02764939
 K 61Z SUPER LADY 41G C02689821
 SFL 38E SILVER PRIDE 35J C02738964
LBH 35J MISS SILVER PRIDE 299P C02846905
 AGA 22B MISS BRIGADER ET 30K

	CE	BW	WW	YW	Milk	TM	MCE	SC	Cow	Stay	MPI	Fat	REA	MAR
EPD	+2.9	+2.9	+44.0	+79.0	+28.1	+50.1	+1.6	+1.4	+30.1	+1.9	+170.4	-0.015	+0.31	+0.28
Acc	.14	.38	.31	.33	.17	-	.12	.28	.58	.32	.32	.23	.23	.20

LBH 72M SUNSHINE LAD 293T C02904954

Tattoo: **LBH 293T**
 Birth Date: **Mar 15, 2007**

BW:**108** Adj:**108** Ind:**92**
 WW:**614** Adj:**638** Ind:**105**
 YW:**1013** Adj:**1011** Ind:**100**

Dec 2/08 Weight: **1760**
 Pelvic: **16.5 x 14 = 231**
 Feb 19/09 Scr Cir: **39.5**



XTC SUNSHINE LAD 38J C02733364
XTC 38J SUNSHINE LAD 72M C02806255
 XTC 36F NORA 82H C02715085
 AGA 4016D STANMORE 4K C02754265
LBH 4K MISS STANMORE 248M C02806186
 AGA MISS 47F DOMINO 46X C02354216

	CE	BW	WW	YW	Milk	TM	MCE	SC	Cow	Stay	MPI	Fat	REA	MAR
EPD	-0.2	+6.1	+47.5	+85.2	+8.6	+32.3	-0.4	+0.8	+44.1	+0.6	+143.1	+0.024	-0.04	0.00
Acc	.10	.38	.31	.33	.16	-	.09	.28	.58	.32	.32	.23	.22	.20

LBH 31R STANMORE 17T C02904704

Tattoo: **LBH 17T**
 Birth Date: **Feb 2, 2007**

BW:**76** Adj:**84** Ind:**118**
 WW:**626** Adj:**645** Ind:**106**
 YW:**1013** Adj:**975** Ind:**97**

Dec 2/08 Weight: **1699**
 Pelvic: **16.75 x 14 = 235**
 Feb 19/09 Scr Cir: **37.5**



AGA 121G STANMORE 20J C02738219
LBH 20J STANMORE 31R C02864574
 LBH 10S STAN LASS 34N C02839909
 AGA 191G STANDARD ET 73L C02796307
LBH 73L MISS STANDARD 126R C02866043
 LBH 101J MISS STANDARD 136N C02827829

	CE	BW	WW	YW	Milk	TM	MCE	SC	Cow	Stay	MPI	Fat	REA	MAR
EPD	+3.2	+1.8	+46.1	+63.0	+24.9	+48.0	+3.7	+0.3	+13.0	+1.0	+169.7	-0.004	+0.11	+0.14
Acc	.11	.38	.30	.32	.09	-	.07	.25	.58	.32	.30	.21	.21	.18

LBH 121P KAPTAIN 41T C02904723

Tattoo: **LBH 41T**
 Birth Date: **Feb 7, 2007**

BW:**76** Adj:**84** Ind:**118**
 WW:**656** Adj:**689** Ind:**113**
 YW:**1060** Adj:**1036** Ind:**103**

Dec 2/08 Weight: **1759**
 Pelvic: **15.75 x 14 = 221**
 Feb 19/09 Scr Cir: **40.5**



C 82F MICKS KAPTAIN 82K C02755740
LBH 82K KAPTAIN 121P C02847004
 AGA 33G MISS STANDARD 165K C02757226
 LBH 35J SILVER PRIDE 165N C02827756
LBH 165N MISS SILVER P 247R C02868314
 LBH 20J MISS STANMORE 209M C02806126

	CE	BW	WW	YW	Milk	TM	MCE	SC	Cow	Stay	MPI	Fat	REA	MAR
EPD	+4.3	+0.5	+37.7	+52.4	+19.3	+38.1	+3.0	+0.4	+1.2	+2.4	+155.8	-0.023	+0.13	-0.16
Acc	.10	.37	.30	.32	.10	-	.07	.27	.58	.32	.30	.21	.21	.18

LBH 165N SILVER PRIDE 52T C02904742

Tattoo: **LBH 52T**
 Birth Date: **Feb 8, 2007**

BW:**100** Adj:**100** Ind:**99**
 WW:**767** Adj:**716** Ind:**118**
 YW:**1274** Adj:**1163** Ind:**115**

Dec 2/08 Weight: **1822**
 Pelvic: **16 x 14 = 224**
 Feb 19/09 Scr Cir: **37**



SFL 38E SILVER PRIDE 35J C02738964
LBH 35J SILVER PRIDE 165N C02827756
 AGA 191G MISS STANDARD 205J C02738124
 AGA 34Z STANDARD ET 10K C02754546
LBH 10K MISS STANDARD 155M C02806086
 AGA 15H MISS BRITISHER 41J C02738206

	CE	BW	WW	YW	Milk	TM	MCE	SC	Cow	Stay	MPI	Fat	REA	MAR
EPD	+0.7	+4.2	+47.4	+76.6	+20.7	+44.4	+0.9	+0.3	+68.8	-0.8	+150.2	+0.011	+0.17	-0.28
Acc	.09	.38	.31	.33	.14	-	.07	.27	.58	.32	.31	.23	.22	.20

LBH 107R RIBSTONE 80T C02904766

Tattoo: **LBH 80T**
 Birth Date: **Feb 10, 2007**

BW:**102** Adj:**100** Ind:**99**
 WW:**646** Adj:**596** Ind:**98**
 YW:**1136** Adj:**1033** Ind:**102**

Dec 2/08 Weight: **1810**
 Pelvic: **16.5 x 13.5 = 223**
 Feb 19/09 Scr Cir: **42.5**



K 64H RIBSTONE LAD 157K C02764939
LCI 157K RIBSTONE 107R C02862176
 LCI 82H KAHLUA ANDIE 174M C02802721
 XTC 15Z ENERLAD STAN 5C C02548395
AGA 5C MISS ENERALD 28K C02754212
 AGA 102E MISS EXTRA 122H C02712414

	CE	BW	WW	YW	Milk	TM	MCE	SC	Cow	Stay	MPI	Fat	REA	MAR
EPD	+1.6	+3.5	+45.9	+86.0	+20.4	+43.3	+1.2	+1.3	+49.1	-0.2	+152.7	-0.021	+0.34	+0.13
Acc	.10	.38	.30	.32	.11	-	.07	.24	.58	.32	.30	.20	.19	.16

LBH 268P STANDARD 111T C02904792

Tattoo: **LBH 111T**
 Birth Date: **Feb 13, 2007**

BW:**86** Adj:**95** Ind:**104**
 WW:**614** Adj:**653** Ind:**104**
 YW:**1034** Adj:**1023** Ind:**100**

Dec 2/08 Weight: **1704**
 Pelvic: **16.25 x 14 = 228**
 Feb 19/09 Scr Cir: **437**



AGA 191G STANDARD ET 73L C02796307
LBH 73L STANDARD 268P C02847073
 LBH 22B MISS RED DOMINO 102M C02806038
 PAHL 38J NAUTILUS 41N C02824824
LBH 41N MISS NAUTILUS 214R C02867277
 AGA 77H MISS BRIGADER 95L C02795454

Sorry no Dam picture available.

	CE	BW	WW	YW	Milk	TM	MCE	SC	Cow	Stay	MPI	Fat	REA	MAR
EPD	+3.1	+2.2	+45.1	+66.9	+18.7	+41.3	+1.9	+0.3	+38.3	-0.5	+150.3	+0.014	+0.26	-0.17
Acc	.09	.37	.29	.29	.07	-	.06	.20	.58	.32	.29	.18	.17	.15

LBH 193N GENERAL 144T C02904812

Tattoo: **LBH 144T**
 Birth Date: **Feb 16, 2007**

BW:**106** Adj:**106** Ind:**93**
 WW:**654** Adj:**625** Ind:**103**
 YW:**1114** Adj:**1037** Ind:**103**

Dec 2/08 Weight: **1771**
 Pelvic: **16.5 x 14.75 = 243**
 Feb 19/09 Scr Cir: **38**



AGA 13G GENERAL 114L C02795506
LBH 114L GENERAL 193N C02827694
 AGA 137Y MISS STANDARD 115A C02480788
 AGA 656U STANDARD ET 101J C02754419
LBH 101J MISS STANDARD 200M C02806121
 AGA 4016D MISS STANMORE 188G C02684099



	CE	BW	WW	YW	Milk	TM	MCE	SC	Cow	Stay	MPI	Fat	REA	MAR
EPD	-4.5	+6.8	+41.4	+71.3	+14.9	+35.6	+0.8	+0.8	+32.3	-0.3	+141.1	-0.007	+0.04	-0.04
Acc	.09	.39	.31	.33	.13	-	.07	.26	.58	.32	.31	.22	.22	.19

LBH 157K RIBSTONE 198T C02904846

Tattoo: **LBH 198T**
 Birth Date: **Feb 22, 2007**

BW:**102** Adj:**106** Ind:**94**
 WW:**646** Adj:**657** Ind:**108**
 YW:**1108** Adj:**1073** Ind:**106**

Dec 2/08 Weight: **1629**
 Pelvic: **16 x 14 = 224**
 Feb 19/09 Scr Cir: **41**



STANDARD 16E RIBSTONE 64H C02713947
K 64H RIBSTONE LAD 157K C02764939
 K 61Z SUPER LADY 41G C02689821
 XTC 38J SUNSHINE LAD 72M C02806255
LBH 72M MISS SUNSHINE LAD 184P C02847010
 AGA 22B MISS BRIGADER 31L C02795437

	CE	BW	WW	YW	Milk	TM	MCE	SC	Cow	Stay	MPI	Fat	REA	MAR
EPD	+0.9	+5.0	+54.0	+99.4	+23.0	+50.0	+0.5	+1.6	+78.0	-0.4	+163.1	+0.022	+0.17	+0.39
Acc	.14	.38	.31	.33	.17	-	.12	.28	.58	.32	.32	.23	.23	.20

LBH 157K RIBSTONE 258T C02904883

Tattoo: **LBH 258T**
 Birth Date: **Mar 6, 2007**

BW:**99** Adj:**99** Ind:**100**
 WW:**600** Adj:**606** Ind:**100**
 YW:**1051** Adj:**1024** Ind:**101**

Dec 2/08 Weight: **1769**
 Pelvic: **16 x 13.5 = 216**
 Feb 19/09 Scr Cir: **39.5**



STANDARD 16E RIBSTONE 64H C02713947
K 64H RIBSTONE LAD 157K C02764939
 K 61Z SUPER LADY 41G C02689821
 CTY BRIGADER 22B C02623018
LBH 22B MISS RED DOMINO 181M C02806104
 AGA 40E MISS STANMORE 80G C02684038

	CE	BW	WW	YW	Milk	TM	MCE	SC	Cow	Stay	MPI	Fat	REA	MAR
EPD	+1.8	+3.6	+42.9	+79.5	+27.1	+48.5	+1.2	+1.1	+46.8	+0.4	+159.4	-0.017	+0.24	+0.28
Acc	.15	.39	.32	.33	.18	-	.13	.29	.58	.32	.33	.24	.24	.21

LBH 157K RIBSTONE 305T C02895544

Tattoo: **LBH 305T**
 Birth Date: **Mar 19, 2007**

BW:**97** Adj:**98** Ind:**101**
 WW:**643** Adj:**689** Ind:**113**
 YW:**1057** Adj:**1076** Ind:**107**

Dec 2/08 Weight: **1786**
 Pelvic: **15.5 x 15 = 233**
 Feb 19/09 Scr Cir: **39.5**



STANDARD 16E RIBSTONE 64H C02713947
K 64H RIBSTONE LAD 157K C02764939
 K 61Z SUPER LADY 41G C02689821
 AGA 121G STANMORE 20J C02738219
LBH 20J MISS STANMORE 106N C02827781
 AGA 12H MISS STANMORE 188L C02795479



	CE	BW	WW	YW	Milk	TM	MCE	SC	Cow	Stay	MPI	Fat	REA	MAR
EPD	+0.5	+4.1	+48.8	+85.0	+30.6	+55.0	+1.9	+1.4	+37.3	+0.1	+174.2	0.000	+0.13	+0.53
Acc	.15	.39	.32	.34	.18	-	.13	.28	.58	.33	.33	.24	.24	.21

LBH 72M SUNSHINE LAD 306T C02904908

Tattoo: **LBH 306T**
 Birth Date: **Mar 19, 2007**

BW:**86** Adj:**87** Ind:**114**
 WW:**603** Adj:**645** Ind:**106**
 YW:**976** Adj:**993** Ind:**98**

Dec 2/08 Weight: **1661**
 Pelvic: **16 x 13.5 = 216**
 Feb 19/09 Scr Cir: **36.5**



XTC SUNSHINE LAD 38J C02733364
XTC 38J SUNSHINE LAD 72M C02806255
 XTC 36F NORA 82H C02715085
 AGA 85J STANDARD 118L C02795548
LBH 118L STANDARD 7N C02827783
 AGA 13G MISS GENERAL 192L C02795481



	CE	BW	WW	YW	Milk	TM	MCE	SC	Cow	Stay	MPI	Fat	REA	MAR
EPD	+2.9	+1.6	+41.5	+70.8	+8.8	+29.5	+2.2	+0.6	+35.8	+1.8	+139.5	0.000	+0.15	-0.18
Acc	.09	.38	.31	.33	.15	-	.08	.28	.58	.32	.32	.23	.22	.20

LBH 192N GENERAL 5T C02908473Tattoo: **LBH 5T**Birth Date: **Jan 31, 2007**

BW:**86** Adj:**86** Ind:**115**
 WW:**699** Adj:**637** Ind:**105**
 YW:**1125** Adj:**1009** Ind:**100**

Dec 2/08 Weight: **1751**
 Pelvic: **16 x 14 = 224**
 Feb 19/09 Scr Cir: **40.5**



AGA 13G GENERAL 114L C02795506
LBH 114L GENERAL 192N C02827807
 AGA 22B MISS BRIGADER ET 30K C02754539
 CC 7Z NASHVILLE 168E C02617608
AGA 168E MISS STANDARD 56G C02684026
 AGA 28Z MISS DOMINO 306C C02599794

	CE	BW	WW	YW	Milk	TM	MCE	SC	Cow	Stay	MPI	Fat	REA	MAR
EPD	+1.6	+2.5	+30.4	+54.7	+12.1	+27.3	+1.9	+0.6	+20.0	+0.3	+124.1	-0.021	+0.06	-0.23
Acc	.08	.38	.31	.33	.15	-	.07	.27	.58	.32	.32	.21	.21	.18

LBH 107R RIBSTONE 25T C02904709Tattoo: **LBH 25T**Birth Date: **Feb 4, 2007**

BW:**90** Adj:**93** Ind:**106**
 WW:**688** Adj:**664** Ind:**106**
 YW:**1109** Adj:**1029** Ind:**100**

Dec 2/08 Weight: **1678**
 Pelvic: **15 x 13.75 = 206**
 Feb 19/09 Scr Cir: **38**



K 64H RIBSTONE LAD 157K C02764939
LCI 157K RIBSTONE 107R C02862176
 LCI 82H KAHLUA ANDIE 174M C02802721
 AGA 53A STANDARD ET 96M C02810873
LBH 96M MISS STANDARD 160P C02846844
 AGA 16F MISS BRIGADER 35H C02712363

Sorry no Dam picture
 available.

	CE	BW	WW	YW	Milk	TM	MCE	SC	Cow	Stay	MPI	Fat	REA	MAR
EPD	+2.1	+1.7	+46.1	+84.2	+21.6	+44.6	-0.1	+0.9	+68.3	-0.6	+150.1	-0.027	+0.29	+0.19
Acc	.08	.37	.28	.29	.09	-	.06	.19	.58	.32	.29	.15	.16	.13

LBH 268P STANDARD 27T C02904711Tattoo: **LBH 27T**Birth Date: **Feb 5, 2007**BW:**85** Adj:**93** Ind:**106**WW:**593** Adj:**615** Ind:**101**YW:**1016** Adj:**984** Ind:**97**Dec 2/08 Weight: **1671**Pelvic: **15.5 x 13.75 = 213**Feb 19/09 Scr Cir: **37.5**

AGA 191G STANDARD ET 73L C02796307

LBH 73L STANDARD 268P C02847073

LBH 22B MISS RED DOMINO 102M C02806038

XTC 38J SUNSHINE LAD 72M C02806255

LBH 72M MISS SUNSHINE LAD 99R C02865552

AGA 44C MISS SILVER 68G C02684032

	CE	BW	WW	YW	Milk	TM	MCE	SC	Cow	Stay	MPI	Fat	REA	MAR
EPD	+3.3	+2.5	+44.6	+67.9	+14.4	+36.7	+1.7	+0.2	+37.4	+0.2	+146.4	+0.018	+0.27	-0.14
Acc	.11	.38	.30	.32	.09	-	.07	.25	.58	.32	.30	.21	.20	.17

LBH 52N SILVER PRIDE 49T C02904740Tattoo: **LBH 49T**Birth Date: **Feb 8, 2007**BW:**80** Adj:**81** Ind:**122**WW:**636** Adj:**605** Ind:**100**YW:**1030** Adj:**951** Ind:**94**Dec 2/08 Weight: **1717**Pelvic: **14.5 x 14.5 = 210**Feb 19/09 Scr Cir: **38**

MARG 50B SILVER PRIDE 38E C02621294

LBH 38E SILVER PRIDE 52N C02827709

AGA 303Y MISS STANDARD 1F C02654875

AGA 191G STANDARD ET 91L C02796301

LBH 91L MISS STANDARD 172N C02827819

AGA 46E MISS BRITISHER 143K C02757210

	CE	BW	WW	YW	Milk	TM	MCE	SC	Cow	Stay	MPI	Fat	REA	MAR
EPD	+2.9	+1.6	+41.5	+70.8	+8.8	+29.5	+2.2	+0.6	+35.8	+1.8	+139.5	0.000	+0.15	-0.18
Acc	.09	.38	.31	.33	.15	-	.08	.28	.58	.32	.32	.23	.22	.20

LBH 107R RIBSTONE 57T C02904751

Tattoo: **LBH 57T**
 Birth Date: **Feb 8, 2007**

BW:**91** Adj:**91** Ind:**109**
 WW:**624** Adj:**582** Ind:**96**
 YW:**1080** Adj:**986** Ind:**98**

Dec 2/08 Weight: **1809**
 Pelvic: **16.25 x 14.75 = 240**
 Feb 19/09 Scr Cir: **40**



K 64H RIBSTONE LAD 157K C02764939
LCI 157K RIBSTONE 107R C02862176
 LCI 82H KAHLUA ANDIE 174M C02802721
 AGA 26H STD BRITISHER 111K C02757197
LBH 111K MISS BRITISHER 76M C02806023
 AGA 168E MISS STANDARD 56G C02684026

	CE	BW	WW	YW	Milk	TM	MCE	SC	Cow	Stay	MPI	Fat	REA	MAR
EPD	+0.3	+3.1	+44.0	+79.2	+20.7	+42.7	+2.7	+0.9	+36.5	+0.2	+154.0	-0.054	+0.60	+0.30
Acc	.08	.38	.30	.31	.10	-	.06	.24	.58	.32	.30	.20	.20	.17

LBH 157K RIBSTONE 88T C02904773

Tattoo: **LBH 88T**
 Birth Date: **Feb 10, 2007**

BW:**89** Adj:**89** Ind:**111**
 WW:**686** Adj:**645** Ind:**106**
 YW:**1135** Adj:**1042** Ind:**103**

Dec 2/08 Weight: **1670**
 Pelvic: **16.25 x 13.75 = 219**
 Feb 19/09 Scr Cir: **39.5**



STANDARD 16E RIBSTONE 64H C02713947
K 64H RIBSTONE LAD 157K C02764939
 K 61Z SUPER LADY 41G C02689821
 AGA 121G STANMORE 20J C02738219
LBH 20J MISS STANMORE 214M C02806130
 AGA 277D MISS STANDARD 136G C02684068

	CE	BW	WW	YW	Milk	TM	MCE	SC	Cow	Stay	MPI	Fat	REA	MAR
EPD	+2.7	+1.5	+42.6	+72.7	+30.6	+51.9	+3.1	+1.3	+36.2	+0.8	+166.8	-0.020	+0.24	+0.32
Acc	.15	.39	.32	.33	.18	-	.13	.28	.58	.32	.33	.24	.23	.21

LBH 20 STANMORE 101T C02904785Tattoo: **LBH 101T**Birth Date: **Feb 11, 2007**BW:**87** Adj:**95** Ind:**104**WW:**580** Adj:**610** Ind:**100**YW:**987** Adj:**969** Ind:**96**Dec 2/08 Weight: **1636**Pelvic: **16.25 x 14 = 228**Feb 19/09 Scr Cir: **39.5**

AGA 4016D STANMORE 121G C02684060

AGA 121G STANMORE 20J C02738219

AGA 40E MISS STANMORE 80G C02684038

STANDRD LAD 656 4ET C02322540

LBH 656 MISS STANDARD 52R C02865233

AGA 18E MISS HOT SHOT 25G C02684002

	CE	BW	WW	YW	Milk	TM	MCE	SC	Cow	Stay	MPI	Fat	REA	MAR
EPD	+1.1	+3.7	+44.0	+69.6	+22.8	+44.8	+1.8	+0.8	+43.7	+0.8	+157.4	+0.021	-0.22	+0.32
Acc	.14	.38	.31	.33	.18	-	.12	.29	.58	.32	.32	.24	.23	.21

LBH 20J STANMORE 105T C02904787Tattoo: **LBH 105T**Birth Date: **Feb 12, 2007**BW:**98** Adj:**108** Ind:**92**WW:**583** Adj:**617** Ind:**102**YW:**1029** Adj:**1014** Ind:**100**Dec 2/08 Weight: **1636**Pelvic: **16.75 x 13.5 = 226**Feb 19/09 Scr Cir: **40.5**

AGA 4016D STANMORE 121G C02684060

AGA 121G STANMORE 20J C02738219

AGA 40E MISS STANMORE 80G C02684038

XTC 38J SUNSHINE LAD 72M C02806255

LBH 72M MISS SUNSHINE LAD 163R C02866073

AGA 22B MISS BRIGADER 53F C02654909

	CE	BW	WW	YW	Milk	TM	MCE	SC	Cow	Stay	MPI	Fat	REA	MAR
EPD	+1.6	+3.9	+49.7	+87.0	+20.8	+45.6	+2.4	+1.1	+55.3	+1.5	+163.8	-0.001	-0.06	-0.04
Acc	.14	.38	.31	.33	.17	-	.11	.28	.58	.32	.32	.24	.23	.21

LBH 91Z HOT SHOT 121T C02904947

Tattoo: **LBH 121T**
 Birth Date: **Feb 14, 2007**

BW:**92** Adj:**93** Ind:**106**
 WW:**617** Adj:**597** Ind:**98**
 YW:**1093** Adj:**1023** Ind:**101**

Dec 2/08 Weight: **1711**
 Pelvic: **16 x 13.5 = 216**
 Feb 19/09 Scr Cir: **38**



HOT SHOT RHRH 20W C02319899
BP HOT SHOT 91Z C02430728
 BP COMMANDER LADY 113R C02118496
 AGA 16F BRIGADER 77H C02712393
LBH 77H MISS RED BRIT 150N C02827729
 AGA 102E MISS EXTRA 63H C02712386

	CE	BW	WW	YW	Milk	TM	MCE	SC	Cow	Stay	MPI	Fat	REA	MAR
EPD	+0.5	+4.6	+36.7	+66.9	+20.3	+38.7	+1.9	0.0	+46.4	+0.3	+140.4	+0.011	+0.02	+0.01
Acc	.10	.38	.30	.32	.17	-	.09	.27	.58	.32	.32	.20	.19	.16

LBH 87P RIBSTONE 127T C02904948

Tattoo: **LBH 127T**
 Birth Date: **Feb 15, 2007**

BW:**107** Adj:**107** Ind:**92**
 WW:**606** Adj:**578** Ind:**95**
 YW:**1054** Adj:**979** Ind:**97**

Dec 2/08 Weight: **1688**
 Pelvic: **17 x 13.75 = 234**
 Feb 19/09 Scr Cir: **37.5**



K 64H RIBSTONE LAD 157K C02764939
LCI 157K RIBSTONE 87P C02843381
 LCI 82H MISS KAHLUA 152M C02802670
 AGA 4016D STANMORE 4K C02754265
LBH 4K MISS STANMORE 221M C02806134
 AGA 18E MISS HOT SHOT 25G C02684002

	CE	BW	WW	YW	Milk	TM	MCE	SC	Cow	Stay	MPI	Fat	REA	MAR
EPD	-4.3	+7.7	+47.1	+84.5	+15.8	+39.4	-0.5	+0.3	+61.9	-1.1	+143.5	+0.044	+0.04	+0.11
Acc	.10	.38	.30	.33	.13	-	.08	.27	.58	.32	.31	.22	.22	.19

LBH 157K RIBSTONE 145T C02895536

Tattoo: **LBH 145T**
 Birth Date: **Feb 16, 2007**

BW:**88** Adj:**87** Ind:**114**
 WW:**625** Adj:**588** Ind:**97**
 YW:**1047** Adj:**967** Ind:**96**

Dec 2/08 Weight: **1536**
 Pelvic: **15.5 x 13.5 = 209**
 Feb 19/09 Scr Cir: **41.5**



STANDARD 16E RIBSTONE 64H C02713947
K 64H RIBSTONE LAD 157K C02764939
 K 61Z SUPER LADY 41G C02689821
 AGA 40Y BRITISHER 52G C02684023
AGA 52G MISS BRITISHER 116J C02738168
 AGA 22B MISS BRIGADIER 176E C02627718

	CE	BW	WW	YW	Milk	TM	MCE	SC	Cow	Stay	MPI	Fat	REA	MAR
EPD	+3.0	+1.4	+35.7	+66.6	+26.4	+44.3	+3.2	+1.2	-1.8	+1.4	+159.3	-0.009	+0.16	+0.39
Acc	.13	.39	.32	.34	.19	-	.11	.27	.58	.32	.33	.22	.22	.19

LBH 52N SILVER PRIDE 178T C02904833

Tattoo: **LBH 178T**
 Birth Date: **Feb 20, 2007**

BW:**98** Adj:**97** Ind:**102**
 WW:**676** Adj:**649** Ind:**107**
 YW:**1052** Adj:**987** Ind:**98**

Dec 2/08 Weight: **1730**
 Pelvic: **15.5 x 15.5 = 240**
 Feb 19/09 Scr Cir: **40.5**



MARG 50B SILVER PRIDE 38E C02621294
LBH 38E SILVER PRIDE 52N C02827709
 AGA 303Y MISS STANDARD 1F C02654875
 AGA 22B BRIGADER 16F C02654887
AGA 16F MISS BRIGADER 35H C02712363
 AGA 99B MISS CENTENNIAL 5E C02625048

	CE	BW	WW	YW	Milk	TM	MCE	SC	Cow	Stay	MPI	Fat	REA	MAR
EPD	+2.7	+2.3	+38.2	+66.5	+20.8	+39.9	-0.1	+0.4	+50.2	+1.4	+146.2	-0.016	+0.09	-0.16
Acc	.09	.39	.31	.33	.15	-	.08	.27	.58	.32	.32	.22	.21	.18

LBH 13G GENERAL 179T C02904834

Tattoo: **LBH 179T**
 Birth Date: **Feb 20, 2007**

BW:**106** Adj:**105** Ind:**94**
 WW:**625** Adj:**597** Ind:**98**
 YW:**1016** Adj:**949** Ind:**94**

Dec 2/08 Weight: **1687**
 Pelvic: **17 x 13.5 = 230**
 Feb 19/09 Scr Cir: **41**



GENERATOR STANDARD 10A C02469961
GEM GENERAL 13G C02689142
 AD 75N LASS 31W C02313035
 CTY BRIGADER 22B C02623018
AGA 22B MISS BRIGADER 31L C02795437
 AGA 218G MISS STANMORE 77J C02738186

	CE	BW	WW	YW	Milk	TM	MCE	SC	Cow	Stay	MPI	Fat	REA	MAR
EPD	-1.5	+4.9	+36.9	+58.0	+15.8	+34.3	-1.6	+0.7	+18.3	-0.5	+137.3	0.000	-0.24	-0.13
Acc	.13	.39	.32	.34	.20	-	.12	.27	.58	.32	.33	.24	.23	.21

LBH 31R STANMORE 181T C02904836

Tattoo: **LBH 181T**
 Birth Date: **Feb 20, 2007**

BW:**99** Adj:**108** Ind:**91**
 WW:**577** Adj:**622** Ind:**102**
 YW:**1007** Adj:**1009** Ind:**100**

Dec 2/08 Weight: **1684**
 Pelvic: **16.25 x 13.75 = 223**
 Feb 19/09 Scr Cir: **37.5**



AGA 121G STANMORE 20J C02738219
LBH 20J STANMORE 31R C02864574
 LBH 10S STAN LASS 34N C02839909
 XTC KING'S DIAMOND LAD 87M C02806207
LBH 87M MISS DIAMOND LAD 39R C02864580
 LBH 101J MISS STANDARD 222M C02806135

	CE	BW	WW	YW	Milk	TM	MCE	SC	Cow	Stay	MPI	Fat	REA	MAR
EPD	-2.5	+6.8	+56.6	+90.3	+21.0	+49.3	+0.3	+0.3	+54.1	-0.2	+169.7	-0.014	+0.52	+0.24
Acc	.11	.37	.30	.32	.09	-	.07	.24	.58	.32	.30	.21	.21	.18

LBH 268P STANDARD 241T C02904869

Tattoo: **LBH 241T**
 Birth Date: **Mar 3, 2007**

BW:**88** Adj:**96** Ind:**103**
 WW:**567** Adj:**631** Ind:**104**
 YW:**1000** Adj:**1029** Ind:**102**

Dec 2/08 Weight: **1611**
 Pelvic: **15 x 14.5 = 218**
 Feb 19/09 Scr Cir: **38.5**



AGA 191G STANDARD ET 73L C02796307
LBH 73L STANDARD 268P C02847073
 LBH 22B MISS RED DOMINO 102M C02806038
 XTC KING'S DIAMOND LAD 87M C02806207
LBH 87M MISS DIAMOND LAD 41R C02864579
 AGA 33G MISS STANDARD 133J C02738159

	CE	BW	WW	YW	Milk	TM	MCE	SC	Cow	Stay	MPI	Fat	REA	MAR
EPD	+1.8	+2.4	+42.1	+61.9	+22.2	+43.3	+2.5	+0.2	+23.7	+0.7	+156.8	+0.022	+0.37	+0.05
Acc	.10	.38	.30	.32	.09	-	.07	.25	.58	.32	.30	.21	.20	.17

LBH 52N SILVER PRIDE 248T C02904875

Tattoo: **LBH 248T**
 Birth Date: **Mar 4, 2007**

BW:**100** Adj:**99** Ind:**100**
 WW:**636** Adj:**630** Ind:**104**
 YW:**1032** Adj:**994** Ind:**98**

Dec 2/08 Weight: **1801**
 Pelvic: **16 x 15 = 240**
 Feb 19/09 Scr Cir: **42**



MARG 50B SILVER PRIDE 38E C02621294
LBH 38E SILVER PRIDE 52N C02827709
 AGA 303Y MISS STANDARD 1F C02654875
 GEM GENERAL 13G C02689142
AGA 13G MISS GENERAL ET 35L C02796302
 MISS 13P STANDARD AGA 26T C02223509

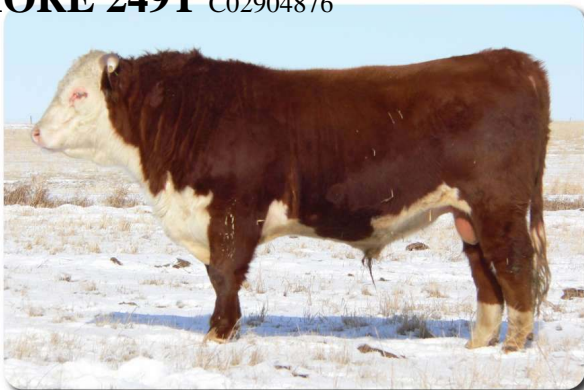
	CE	BW	WW	YW	Milk	TM	MCE	SC	Cow	Stay	MPI	Fat	REA	MAR
EPD	+1.7	+3.5	+35.4	+55.4	+22.1	+39.8	+0.1	+0.9	+15.5	+2.2	+152.6	-0.013	+0.13	-0.25
Acc	.10	.38	.31	.33	.15	-	.09	.28	.58	.32	.32	.22	.22	.19

LBH 31R STANMORE 249T C02904876

Tattoo: **LBH 249T**
 Birth Date: **Mar, 2007**

BW:**97** Adj:106 Ind:**94**
 WW:**533** Adj:**594** Ind:**98**
 YW:**924** Adj:**952** Ind:**94**

Dec 2/08 Weight: **1580**
 Pelvic: **15.75 x 14.75 = 232**
 Feb 19/09 Scr Cir: **38.5**



Sorry no Dam picture
 available.

AGA 121G STANMORE 20J C02738219
LBH 20J STANMORE 31R C02864574
 LBH 10S STAN LASS 34N C02839909
 LBH 114L GENERAL 192N C02827807
LBH 192N MISS GENERAL 10R C02865118
 FE 135D BRIT DOM 74J C02733252

	CE	BW	WW	YW	Milk	TM	MCE	SC	Cow	Stay	MPI	Fat	REA	MAR
EPD	-1.2	+5.4	+50.5	+78.0	+17.7	+43.0	+0.5	+0.7	+51.8	+0.3	+157.6	-0.007	+0.12	+0.14
Acc	.11	.37	.30	.32	.08	-	.07	.24	.58	.32	.30	.21	.20	.18

LBH 119R SUNSHINE LAD 261T C02904886

Tattoo: **LBH 261T**
 Birth Date: **Mar 7, 2007**

BW:**87** Adj:**88** Ind:**112**
 WW:**567** Adj:**585** Ind:**96**
 YW:**990** Adj:**977** Ind:**97**

Dec 2/08 Weight: **1668**
 Pelvic: **14.25 x 14 = 221**
 Feb 19/09 Scr Cir: **37**



AGA 121G STANMORE 20J C02738219
LBH 20J STANMORE 31R C02864574
 LBH 10S STAN LASS 34N C02839909
 XTC KING'S DIAMOND LAD 87M C02806207
LBH 87M MISS DIAMOND LAD 39R C02864580
 LBH 101J MISS STANDARD 222M C02806135

	CE	BW	WW	YW	Milk	TM	MCE	SC	Cow	Stay	MPI	Fat	REA	MAR
EPD	+4.1	+1.1	+40.4	+67.0	+18.6	+38.8	+1.9	+0.6	+20.5	+1.0	+150.9	-0.001	+0.20	+0.02
Acc	.07	.37	.29	.31	.10	-	.06	.26	.58	.32	.30	.21	.20	.18

LBH 20J STANMORE 269T C02904890

Tattoo: **LBH 269T**
 Birth Date: **Mar 10, 2007**

BW:**100** Adj:**99** Ind:**100**
 WW:**587** Adj:**593** Ind:**98**
 YW:**973** Adj:**951** Ind:**94**

Dec 2/08 Weight: **1653**
 Pelvic: **17.25** x **14** = **242**
 Feb 19/09 Scr Cir: **39.5**



AGA 4016D STANMORE 121G C02684060
AGA 121G STANMORE 20J C02738219
 AGA 40E MISS STANMORE 80G C02684038
 AGA 16F BRIGADER 77H C02712393
AGA 77H MISS BRIGADER 10L C02795433
 AGA 101E MISS GENERATOR 128G C02684063

	CE	BW	WW	YW	Milk	TM	MCE	SC	Cow	Stay	MPI	Fat	REA	MAR
EPD	+0.6	+2.9	+43.7	+70.9	+25.0	+46.9	+2.5	+0.7	+32.7	+1.6	+164.3	-0.015	-0.15	-0.03
Acc	.13	.39	.32	.34	.19	-	.11	.29	.58	.32	.33	.24	.24	.21

LBH 268P STANDARD 279T C02904897

Tattoo: **LBH 279T**
 Birth Date: **Mar 13, 2007**

BW:**104** Adj:**114** Ind:**87**
 WW:**583** Adj:**672** Ind:**111**
 YW:**953** Adj:**1009** Ind:**100**

Dec 2/08 Weight: **1639**
 Pelvic: **15** x **13.5** = **203**
 Feb 19/09 Scr Cir: **41**



AGA 191G STANDARD ET 73L C02796307
LBH 73L STANDARD 268P C02847073
 LBH 22B MISS RED DOMINO 102M C02806038
 LBH 35J SILVER PRIDE 165N C02827756
LBH 165N MISS SILVER P 212R C02867275
 AGA 9012 MISS STANMORE 61E C02625134

	CE	BW	WW	YW	Milk	TM	MCE	SC	Cow	Stay	MPI	Fat	REA	MAR
EPD	+1.0	+3.9	+44.5	+59.4	+18.2	+40.4	+0.8	+0.4	+23.4	-0.1	+153.0	+0.031	+0.10	-0.12
Acc	.11	.38	.30	.32	.09	-	.07	.25	.58	.32	.30	.20	.20	.17

LBH 31R STANMORE 331T C02911076

Tattoo: **LBH 331T**
 Birth Date: **Mar 27, 2007**

BW:**92** Adj:**100** Ind:**100**
 WW:**550** Adj:**659** Ind:**113**
 YW:**899** Adj:**984** Ind:**97**

Dec 2/08 Weight: **1461**
 Pelvic: **15.25 x 13.75 = 217**
 Feb 19/09 Scr Cir: **38.5**



AGA 121G STANMORE 20J C02738219
LBH 20J STANMORE 31R C02864574
 LBH 10S STAN LASS 34N C02839909
 AGA 191G STANDARD ET 73L C02796307
LBH 73L MISS STANDARD 114R C02865564
 LBH 5C MISS ENERLAD 57N C02827762

	CE	BW	WW	YW	Milk	TM	MCE	SC	Cow	Stay	MPI	Fat	REA	MAR
EPD	+2.5	+3.7	+50.5	+68.9	+27.2	+52.5	+2.1	+0.5	+32.8	-0.1	+172.5	+0.011	-0.07	+0.02
Acc	.12	.37	.30	.32	.09	-	.08	.25	.58	.32	.30	.21	.21	.18

LBH 87M DIAMOND LAD 348T C02904918

Tattoo: **LBH 348T**
 Birth Date: **Apr 9, 2007**

BW:**104** Adj:**105** Ind:**96**
 WW:**559** Adj:**642** Ind:**110**
 YW:**900** Adj:**970** Ind:**97**

Dec 2/08 Weight: **1505**
 Pelvic: **14.5 x 14.5 = 210**
 Feb 19/09 Scr Cir: **40**



BCD 721G KING 6K C02766410
XTC KING'S DIAMOND LAD 87M C02806207
 XTC 9A TEMP DIAMOND 36D C02590123
 AGA 656U STANDARD ET 101J C02754419
LBH 101J MISS STANDARD 53N C02827703
 AGA 852 MISS STANMORE 97D C02592544

	CE	BW	WW	YW	Milk	TM	MCE	SC	Cow	Stay	MPI	Fat	REA	MAR
EPD	-4.9	+6.6	+45.8	+75.9	+16.4	+39.3	-0.2	+0.5	+46.3	-0.7	+146.2	+0.006	+0.43	+0.07
Acc	.10	.38	.30	.32	.15	-	.09	.26	.58	.32	.31	.21	.21	.18

Every fall we offer a select group of heifers and/or cows for sale. Please check with us for details.



Put some LBH Genetics into your Herd, you won't be disappointed!

Here is an example of the yearling bulls for sale.



Steers at Kasko



You can choose with confidence from a herd with close to 50 years of performance records, built on maternal strength to perform in any condition and management style.

Performance Data for U-Bull Calves

All weights are in Pounds (lb), (1 lb = 0.454 kg).

The bulls with LARGE printed birth weights we feel could be used on heifers!

B.D.= Birth Date, B.W. = Actual Birth Weight, WPDA = Weight Per Day of Age, 205D = Adjusted 205 Day Weight

Tattoo	B.D.	B.W.	Dam Tattoo	Sire Tattoo	W.Wgt Sept.20	Adj. ADG	WPDA	Adj 205D	Wean Index
LBHD 4U	JAN 31	69	LBH 53S	LBH 268P	617	2.72	2.64	633	98
LBH 10U	FEB 1	101	ALNK 203U	LBH 52N	758	2.92	3.27	700	109
LBH 11U	FEB 1	88	LBH 211N	XUB 118L	733	2.87	3.16	677	105
LBH 14U	FEB 2	102	LBH 110N	CJK 157K	710	2.71	3.07	657	102
LBH 21U	FEB 4	87	XUB 53K	CJK 157K	714	2.77	3.12	654	101
LBH 23U	FEB 4	90	LBH 144M	CJK 157K	773	3.03	3.38	711	110
LBH 24U	FEB 5	90	LBH 87N	CJK 157K	684	2.68	3.00	639	99
LBH 25U	FEB 5	106	XUB 17J	LBH 268P	718	2.73	3.15	665	103
LBH 26U	FEB 5	79	LBH 55S	XUB 20J	612	2.69	2.68	638	99
LBH 28U	FEB 5	93	LBH 247R	LCI 107R	688	2.82	3.02	674	105
LBHM 30U	FEB 5	66	LBH 92S	LBH 268P	663	3.02	2.91	691	107
LBH 31U	FEB 5	83	XUB 171G	CJK 157K	686	2.80	3.01	657	102
LBH 36U	FEB 7	88	LBH 76M	LCI 107R	651	2.52	2.88	604	94
LBH 38U	FEB 7	93	LBH 42R	LBH 52N	700	2.88	3.10	687	107
LBH 39U	FEB 7	82	XUB 82L	CJK 157K	786	3.14	3.48	725	113
LBH 47U	FEB 8	88	LBH 209M	CJK 157K	717	2.83	3.19	668	104
LBH 48U	FEB 8	90	XUB 209J	CJK 157K	673	2.63	2.99	628	97
LBH 50U	FEB 8	87	XUB 30K	CJK 157K	693	2.71	3.08	642	100
LBH 54U	FEB 8	85	LBH 27R	LBH 52N	717	3.01	3.19	706	109
LBH 62U	FEB 9	83	LBH 71L	CJK 157K	655	2.57	2.92	608	94
LBH 63U	FEB 10	86	LBH 81P	CJK 157K	654	2.65	2.93	631	98
LBH 65U	FEB 10	95	XUB 86K	CJK 157K	671	2.59	3.01	625	97
LBHR 66U	FEB 10	108	LBH 34N	LBH 52N	724	2.82	3.25	686	106
LBH 69U	FEB 10	77	LBH 249P	XUB 20J	621	2.54	2.78	600	Twin
LBH 70U	FEB 10	61	LBH 249P	XUB 20J	650	2.76	2.91	628	Twin

Tattoo	B.D.	B.W.	Dam Tattoo	Sire Tattoo	W.Wgt Sept.20	Adj. ADG	WPDA	Adj 205D	Wean Index
LBH 72U	FEB 10	100	XUB 169L	CJK 157K	696	2.68	3.12	648	101
LBH 74U	FEB 10	103	LBH 102N	CJK 157K	696	2.71	3.12	659	102
LBH 80U	FEB 11	100	LBH 18N	CJK 157K	667	2.60	3.00	633	98
LBH 81U	FEB 11	88	XUB 73J	CJK 157K	757	3.05	3.41	713	111
LBH 88U	FEB 11	109	LBH 165P	LCI 107R	755	3.03	3.40	731	113
LBH 89U	FEB 11	92	LBH 226R	LBH 52N	651	2.70	2.93	648	101
LBH 90U	FEB 11	81	LBH 162R	CXT 87M	676	2.87	3.05	672	104
LBH 91U	FEB 12	79	LBH 152S	LBH 268P	654	2.97	2.96	696	108
LBH 97U	FEB 12	92	LBH 260P	LBH 52N	750	3.10	3.39	729	113
LBH 99U	FEB 12	88	LBH 167S	LBH 148S	622	2.76	2.81	662	103
LBH 105U	FEB 12	97	XUB 61K	CJK 157K	644	2.48	2.91	604	94
LBH 107U	FEB 13	105	LBH 230P	LBH 52N	744	3.02	3.38	725	112
LBH 108U	FEB 13	105	XUB 21J	LCI 107R	737	2.90	3.35	699	108
LBH 114U	FEB 13	102	LBH 30R	LBH 52N	674	2.77	3.06	673	104
LBH 116U	FEB 13	90	LBH 19P	CJK 157K	637	2.58	2.90	620	96
LBH 120U	FEB 14	105	XUB 203L	CJK 157K	758	2.98	3.46	714	111
LBH 126U	FEB 14	80	LBH 18S	LBH 268P	636	2.88	2.90	678	105
LBH 131U	FEB 15	83	LBH 142R	LBH 220R	597	2.51	2.74	601	93
LBH 134U	FEB 15	87	LBH 182P	CJK 157K	664	2.74	3.05	651	101
LBH 142U	FEB 16	96	LBH 125M	LBH 52N	695	2.77	3.20	662	103
LBH 149U	FEB 16	103	LBH 180N	CJK 157K	690	2.74	3.18	665	103
LBH 151U	FEB 17	102	LBH 32R	CJK 157K	672	2.80	3.11	679	105
LBH 156U	FEB 17	82	LBH 238S	LBH 268P	552	2.48	2.56	598	93
LBH 157U	FEB 17	104	LBH 151N	CJK 157K	613	2.38	2.84	593	92
LBH 162U	FEB 18	105	LBH 157M	LBH 52N	700	2.77	3.26	671	104
LBH 163U	FEB 18	102	LBH 184P	XUB 20J	676	2.75	3.14	668	104
LBH 168U	FEB 19	89	LBH 119M	LBH 268P	693	2.82	3.24	666	103
LBH 169U	FEB 19	93	LBH 117S	LBH 268P	646	2.92	3.02	700	109
LBH 177U	FEB 20	101	LBH 56N	XUB 73L	656	2.63	3.08	640	99
LBH 181U	FEB 21	105	XUB 13J	LBH 52N	683	2.73	3.22	663	103
LBH 183U	FEB 22	89	LBH 57S	LBH 268P	631	2.89	2.99	689	107
LBH 194U	FEB 24	94	LBH 232S	ERA 38R	623	2.85	2.98	688	107
LBH 195U	FEB 24	108	LBH 124S	LBH 268P	594	2.61	2.84	653	101

Tattoo	B.D.	B.W.	Dam Tattoo	Sire Tattoo	W.Wgt Sept.20	Adj. ADG	WPDA	Adj 205D	Wean Index
LBH 196U	FEB 24	80	LBH 129S	LBH 148S	621	2.91	2.97	683	106
LBHR 200U	FEB 24	102	LBH 42M	LBH 220R	642	2.56	3.07	627	97
LBH 207U	FEB 25	103	LBH 141S	LBH 148S	630	2.84	3.03	695	108
LBH 211U	FEB 26	93	LBH 209S	ERA 38R	612	2.82	2.96	679	105
LBH 221U	FEB 27	86	LBH 173S	LBH 148S	548	2.51	2.66	609	94
LBH 228U	FEB 28	93	LBH 21R	LBH 192N	705	3.12	3.44	736	114
LBH 230U	FEB 29	93	LBH 183R	CXT 87M	692	3.07	3.39	726	113
LBH 236U	Mar 1	96	LBH 134R	CJK 157K	716	3.19	3.53	753	117
LBH 240U	Mar 2	94	LBH 169S	LBH 14S	574	2.65	2.84	645	100
LBH 243U	Mar 3	96	LBH 194N	LBH 220R	601	2.50	2.99	609	94
LBH 248U	Mar 4	96	LBH 208P	CJK 157K	583	2.47	2.92	603	94
LBH 249U	Mar4	103	LBH 129N	CXT 72M	687	2.90	3.44	698	108
LBH 256U	Mar 6	91	ALNK 105P	CXT 87M	607	2.56	3.07	632	98
LBH 262U	Mar8	95	XUB 81K	LBH 52N	693	2.97	3.54	702	109
LBH 265U	Mar 9	104	LBH 116M	CXT 87M	628	2.62	3.22	641	99
LBH 280U	Mar 13	88	LBH 282R	LBH 52N	614	2.84	3.21	674	108
LBH 281U	Mar 13	89	LBH 313S	LBH 268P	584	2.85	3.06	682	110
LBH 288U	Mar 15	85	LBH 78R	LBH 52N	603	2.80	3.19	662	106
LBH 293U	Mar 16	106	LBH 242N	LBH 220R	619	2.67	3.29	654	105
LBH 296U	Mar 16	97	LBH 166M	XUB 73L	630	2.74	3.35	657	106
LBH 299U	Mar 18	96	LBH 181M	LBH 52N	615	2.69	3.31	646	104
LBH 300U	Mar18	103	LBH 177N	LBH 220R	703	3.14	3.78	747	120
LBH 302U	Mar18	98	LBH 306P	XUB 20J	662	3.01	3.56	717	115
LBH 306U	Mar 19	104	LBH 306N	CXT 87M	683	3.04	3.69	728	117
LBH 307U	Mar 19	99	LBH 50R	XUB 20J	584	2.67	3.16	650	104
LBHR 311U	Mar 20	93	LBH 121R	LBH 52N	612	2.87	3.33	684	110
LBH 317U	Mar 22	94	LBH 102S	LBH 268P	582	2.89	3.20	694	111
LBH 318U	Mar 23	104	LBH 278P	LBH 220R	609	2.76	3.36	670	108
LBH 324U	Mar 26	100	LBH 45R	LBH 52N	585	2.75	3.29	666	107
LBH 328U	Mar 27	95	LBH 20P	LBH 192N	651	3.07	3.68	725	116
LBH 363U	APR 13	106	XUB 188L	LBH 52N	515	2.36	3.22	589	95
LBH 367U	APR 16	101	LBH 191P	XUB 20J	555	2.74	3.54	663	107

For other information please visit our website: www.lilybrookherefords.com

MISS 13P STANDARD AGA 26T C02223509



One of the most influential cows in our herd, she is in the background of most pedigrees. She is the dam of Herd Bulls: 73L and 40Y as well as 4 more. Grand dam of 268P, 220R, and 192N. Flushed her at 15 years of age.

AGA 137Y MISS STANDARD 115A C02480788



Our cow of Great Distinction; mother of 193N, the high selling bull in Medicine Hat to Pahl Livestock. She is the dam to 19T, 99T, and 170T entered in Calgary this year, and her natural 157K son, 66T here at home, plus 14 daughters in our herd and 19 maternal grand daughters in our herd Pictured as a 14 year old cow! Raised her last calf at 17.